



## Lucky Charm Quilt 25" x 25"

### Supplies Needed:

Background fabric	½ yard
Dark fabric for 9 patches & applique	1 fat quarter
Dark fabric for hourglass & applique	1 fat quarter
Binding fabric	½ yard
Batting	26" square
Backing	¾ yard
Freezer paper	1 yard
Marking pencil	



### Cutting Instructions:

9 patch blocks  
Cut 5 strips 1½" x 18" from the dark  
Cut 4 strips 1½" x 18" from the background

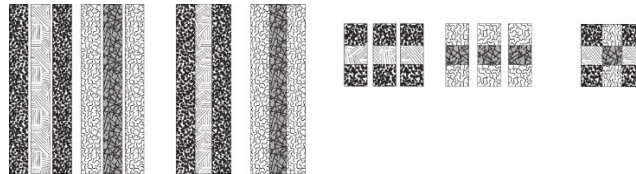
Hour glass blocks  
Cut 5" squares (7 dark and 7 background)  
Each pair of 1 dark and 1 background square will make TWO hourglass blocks.  
You will have one left over.

Borders  
Cut 2 strips 5" x 15½" from the background  
Cut 2 strips 5" x 25½" from the background

Applique  
Cut 6 hearts using the templates provided from each of the 2 dark fabrics.  
Add ¼" seam allowance for needle turn applique method.

**To make the 9 patch blocks:** (Always use ¼" seam allowance.)

1. Arrange three 1½" strips (dark, background, dark) and sew them together lengthwise. Repeat.
2. Arrange three 1½" strips (background, dark, background) and sew them together lengthwise.
3. Press toward the dark strips.
4. Cross cut the strip sets into 1½" sections and sew them into 9patches.
5. Trim the finished blocks to an exact 3½" if needed.



### To make the hourglass blocks:

1. Layer a light 5" square on top of a dark 5" square right sides together.
2. Mark a diagonal line from corner to corner.
3. Sew  $\frac{1}{4}$ " away from drawn line on both sides.
4. Cut on the drawn line.



5. Press to the dark fabric and layer one HST block on top of the other, right sides together.
6. The dark should be facing the background and the background should be facing the dark.
7. Draw a diagonal line in the opposite direction of your sewn seams.
8. Sew  $\frac{1}{4}$ " away from drawn line on both sides. Then cut on the drawn line.
9. Press to the dark making a pinwheel of the seam allowances to reduce bulk.
10. You will have two finished blocks, trim them to an exact  $3\frac{1}{2}$ ".



### To assemble the top:

1. Referring to the photo, arrange your blocks to ensure the hourglasses are facing the correct direction.
2. Alternate 9 patches and hourglass blocks starting and ending with an hourglass in the first row.
3. To check placement of hourglass blocks, each 9patch should be entirely surrounded by either background OR darks (not both).
4. Sew the rows together one at a time and PRESS the seams toward the 9 patch blocks.

### Add the borders:

1. Sew the  $5'' \times 15\frac{1}{2}''$  borders to opposite sides of the quilt top.
2. Press the seams toward the borders.
3. Sew the  $5'' \times 25\frac{1}{2}''$  borders to the remaining sides of the quilt top.
4. Press the seams toward the borders.

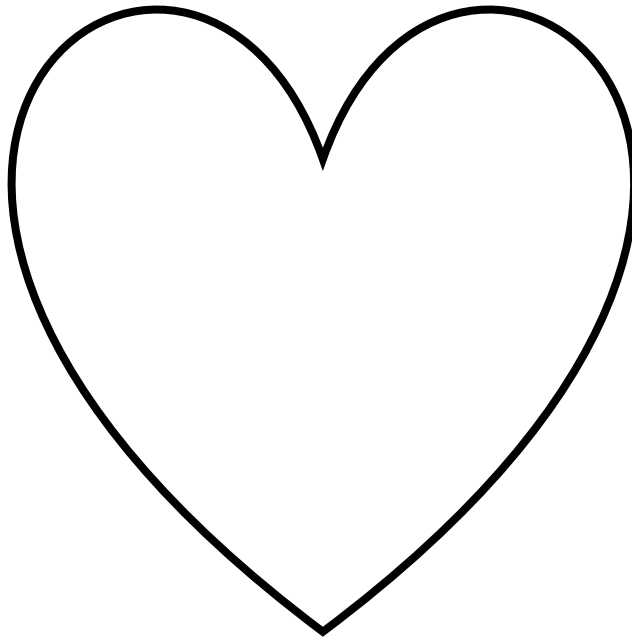
### Applique:

1. Arrange the hearts at the corners of the borders as shown.
2. Using your favorite method of applique, stitch the hearts in place.

### Finishing the Quilt:

1. Layer, baste and quilt the quilt.
2. Using freezer paper, cut a strip  $5'' \times 26''$ .
3. Fold the freezer paper in half lengthwise, then fold again in half.
4. Open the freezer paper and accordion fold on the creases.
5. Trace a curve at the edge of the freezer paper and trim it away on the drawn line.
6. Open the freezer paper and center it on one border of the quilt.
7. Mark the curved line.
8. Repeat on the remaining 3 borders.
9. Sew the bias binding to the drawn line.
10. Cut away excess and finish binding.

*Lucky Charm Quilt*  
Heart Applique



Curve for border

